

Kaikoura A & P Show

Saturday February 26, 2011

South Bay Domain, Kaikoura

Opening at 8am



Entry Fee: Adults \$7, Children under 12 Free, Cars free

Kaikoura A & P Show

A Kaikoura Star Advertising Feature



Have a fantastic day at the annual show

It is with great pleasure that I congratulate the chairman and team of the Kaikoura A&P Association as all their hard work in organizing the 99th annual Agricultural and Pastoral Show reaches fruition. Mention must be made of the judges and officials that ensure all the events run so smoothly on the day, contributing a great deal to its success.

The annual A&P Show is an event that brings together all that is best about Kaikoura and its surrounding area. Kaikoura also provides one of the most scenic venues in New Zealand for the show and the rugged beauty of the southern side of the peninsula needs to be experienced to be fully appreciated.

I strongly urge everyone who is able to attend to set some time aside for this year's Kaikoura A&P Show. You will experience all the fun and joy that this event has given over many

generations, ranging from watching elegantly presented riders atop immaculately groomed horses competing dressage events through to getting up close with locally farmed animals. Local businesses have trade stands that sit side by side with interesting and educational displays by Environment Canterbury and the Department of Conservation. On a lighter note there's the sideshow alley, always popular with the young.

There's always so much to see and do throughout the day but the event that always ends

up taking my attention is the shearing competition. I won this competition back in the 1980s before I went on to win the Golden Shears, so I always look to see how the shearers are going as they too compete their way towards the next Golden Shears later in the year.

I look forward to seeing a great turnout of people, locals and visitors alike, at this year's Kaikoura A&P Show. We are all assured of having a fantastic day in an incredibly beautiful place New Zealand can be justifiably proud of

~ Colin King



Kaikoura A&P Association Show Entries 2008-2010

Sections	2009	2010	2011
1. Sheep	38	41	41
2. Hacks	191	168	210
2a. Hack Hunters	106	46	64
3. Ponies	250	241	149
3a. Pony Hunters	33	30	20
4. Jumping - Ponies	45	38	69
- Hacks	50	38	
5. Stock & Station	130	130	133
6. Miniature Horses	102	69	67
10. Home Industries	83	97	54
11. Cooking	170	185	282
12. Handcraft	120	95	109
15. Photography	166	205	207
16. Farm yard Corner	10	17	8
17. Dogs	22	21	22

1516 1421 1439

Horse and Pony entries are down due to increased cost involved with travel and the choices of other events held on the same weekend for the competitors. In reflection these factors have contributed to the lower horse & pony entries at our show.

All other sections are well supported and in particular cooking with a huge increase.



BEATTIE INSULATORS
ELECTRIC FENCING FOR GENERATIONS

For All Your Electric Fencing Needs
Come See Us At The Show !

***** BRAND NEW *****
UNBREAKABLE SPRING-LESS GATE HANDLE



You May Be Surprised at What We Have !!

www.beattieinsulators.co.nz



STOCKMAN STATUES
AT GENEVIEVE'S

Good luck for a very successful day

GENEVIEVE'S

Open every day - 47 West End
P: 03 319 5095 E: genevieve1@xtra.co.nz



WAIPAPA AGLIME

High calcium - Fertmark registered - Cost effective
also roading and landscape products

Phone: Alan Best 03 319 4414 or 0274 400 366

We are pleased to support the Kaikoura A & P Show

HARNETT'S BUTCHERY SUPPORTS THE A&P SHOW

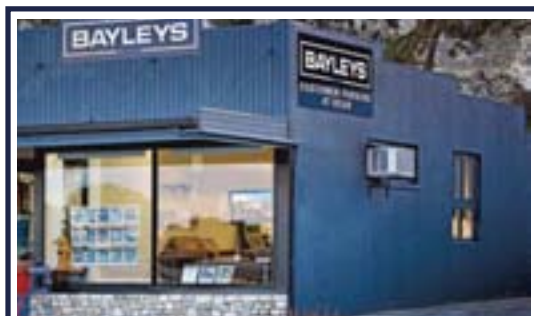
1st PRIZE Kebabs Chicken/Lamb/Beef \$200 each

2nd PRIZE Pork and Leek Sausages Gluten-free \$1150 kg

3rd PRIZE Cajun Diced Beef \$1950 kg

QUALITY MEATS
FRIENDLY SERVICE

West End Phone 319 5185



BAYLEYS

Licensed Agent (REAA 2008)

Our objective is to achieve the highest possible price for your property on the terms that are most advantageous to you.

Bayleys philosophy is to provide extraordinary service, with a total personal commitment.

Robin Gibson 027 4339 255
Eve Parkin 027 2717 356
60 West End Parade, Kaikoura
03 319 7049

kaikoura@bayleys.co.nz www.bayleys.co.nz

Kaikoura A & P Show

A Kaikoura Star Advertising Feature



Come to the Show!

The Kaikoura A&P Show returns for 2011, with this year's event kicking off on February 26, 8am at the South Bay Racecourse. A fun, family day out is what is on offer at the 99th Kaikoura A&P Show, and the A&P Association have worked hard to ensure the show has something for everyone. "This year, we have worked on bringing an event to cater for the whole family from the toddler to great grandma," says A&P Secretary Lynne Smith. "We will have all the 'fun of the fair' with amusements like chair o' plane, ferris wheel, mini jeeps and a toy train as well as many new contests and more of the old because they are so popular."

There will be a new contest for this year, dedicated to mother and daughter in the Look-A-Like Contest. Daughter must be 13 years and over and can use dress to enhance the effect and even looking just a little alike could win them a makeover for two valued at \$110 or a \$30 hair voucher. The ever-popular contest to find the cutest baby returns with all entries to be received on the day and Plunket is bringing in a new contest for the littlies with decorated bikes.

There will also be some excellent displays in the main marquee and lots of fine stock will be on show too, looking to take home a prize.

Overall, the show offers entertainment and fun, both of the standard A&P Show variety, as well as a few things that are more than a little different.

"Watching someone drink a blend of ground fish innards to win the ultimate title of the Hard Woman or Man contest seems to bring the primeval out of us all," Lynne says, "and watching dedicated farmers bring in their Ultimate Thistle like a prize possession makes one wonder just what they are farming!"

"This year's show is the 99th as we lead up to our Centennial Show in 2012. For the Centennial Show we have some fabulous new events arranged to make it a show to remember for the next 100 years. But for this year, we have Shearing, Dogs, Sheep, Produce, Home industries, Baby show, Miss Kaikoura A&P, Mechanical Bull, Rides, Clown and lots more, so we look forward to seeing you all on Saturday February 26 at South Bay Racecourse where the Show's first event starts at 8am."



**Join the CRT team
at the Kaikoura
A&P Show**



0800 278 583 www.crt.co.nz

Kaikoura Storage

Secure containers available for hire



Short or long term

Dry storage

Good rates

Phone Fraser 319 5562 or 021 244 8005
19 Beach Road - Kaikoura

Duncan MK4 Direct Drill Aged NEW stock clearance



Come and see us at the A&P Show



- \$4,250+ off retail
- \$15k deposit
- No repayments for 12 months (apart from gst)
- 5.9% over 48 months
- Only \$1182 per month

LA105



LA115



X130R



Contact us for Sales, Service & Parts

Tractor & Machinery Sales
Quintin Boyd 021 579 130
Fraser Ibbotson 021 579 122

GroundsCare Sales
John Hunt 021 480 079

KAIKOURA - 80 Beach Road
Ph 03 319 7119
www.gordonhandy.co.nz

Gordon Handy
Machinery Ltd



Kowhai Ford Road
Phone 319 5084

Email: scott.ford@downer.co.nz

- Roading, driveways, carparks
- Concrete construction & Retaining walls
- Water works & maintenance
- Earthworks & drainage
- Compaction & Geotech reports

FREE COMPETITIVE QUOTES

Kaikoura A & P Show

A Kaikoura Star Advertising Feature



Plenty to see at the main marquee

No show day at the Kaikoura A&P Show would be complete without a visit to the Main Marquee. A prominent feature this year is the brand new Mother-Daughter Look-Alike Competition. If you are 13 and over, bring Mum along, enter the competition and you could win a makeover for two with Indulge Body & Soul!

There will also be a baby show for those aged newborn to two and a half with four classes to enter in, and the Miss Kaikoura and Master Kaikoura Pageant with six age classes for those aged four to sixteen. Both these events are always very popular, and you can check out the Decorated Bicycle Competition that will be happening as well.

You can also take in the sights and spectacle of

the Photography Competition Display, which always exhibits high levels of creativity and talent; categories include animals, people studies and landscapes.

And last but not least there will also be a good range of Health Providers on site with information, displays and people on hand to give their advice, information and expertise.

"It's a good chance for rural people to have access to these services," says coordinator of the Health providers Wayne Smith, Maori Health Manager for the Rural Canterbury PHO based in Christchurch.

In all, the Main Marquee offers plenty to entertain show-goers of all ages, so be sure you make it a 'must-see' part of your show weekend.



Champion thistles

It could be behind your farm shed, out in a tree grove, in the middle of a paddock or right outside your back door – but if you have a Champion Thistle to enter in the Kaikoura A&P Show Champion Thistle competition, then it's almost time to get out the grubber to try and win your share of two prizes sponsored by Peter Chapman Weed Control, as well as spot prizes.

The search for Kaikoura's ultimate thistle is judged by the number of flowers on the plant,

the more the better. Enter at the Show, judging is at 10:30am, with the proviso that you must be there if your name is drawn to claim the prize. So get out to your thistle patch and search for that elusive 'grander' thistle and take it along to the Show to get your entry in!

Thistles don't have to be grown by you, so you can covet your neighbours, or road-side thistles and enter them!



Colour the picture & put yourself, your favourite person or your best show attraction in the gap beside the clown.

GREAT PRIZES TO BE WON

Age groups 5 & under, 6-8, 9-12

Entries close:
Thursday, February 24, 2011
 Drop your entry into the Kaikoura Star Office

Name

Address

Phone

Age

Kaikoura A & P Show

A Kaikoura Star Advertising Feature



Two popular competitions back for another Show

The Hard Man and Woman and Gift Lamb Competitions return for the 2011 Kaikoura A&P Show. With both events gaining in popularity over the last few years, organiser Heath Urquhart is keen to see this year's editions continue to build on that momentum.

The Hard Man and Woman Competition is in its third year this year and entries are being gathered all around Kaikoura looking to beat last year's record number of entrants by getting more than 22.

Sponsored by Kaikoura's The Pier Hotel and Speights, the competition sees entrants competing in a Food Tech section, an obstacle course and waiter race, amongst much more. Every competitor will receive a Speights product and the competition will be held in a more central part of the Showgrounds to make for easier and better viewing too.

"We've listened to people's feedback from last year and we reckon we've got an excellent schedule of events for the Hard Man and Hard Woman Competition," Heath says. "You can enter in businesses all around town but you must

be over 18 years of age to be part of the fun!"

The Gift Lamb Competition is another popular favourite which is getting stronger and stronger with each Show. Now in its ninth year, the competition sees local farmers bringing their finest new season lamb in to be judged at the show and a cup will be awarded for the best Gift Lamb on the day.

On the Monday following, the lambs are slaughtered and then judged for the finest lamb on the hook too.

Entries are open right up till show day with the usual array of great prizes; it is a very worthwhile competition for participants.



FISSENDEN BROS LTD
 Earthmoving Contractors Since 1938

- Land Developments and Earthworks
- Discing - Roottraking - Pipe Ploughing
- Shingle and Soil Suppliers
- Certified Construction Blasting

PLANT HIRE
 JOHN 319 5974 or 027 222 3586

"a Patch of Country"

THE QUILTERS DREAM STORE

- Patchwork Fabric • Needlework
- Knitting Wool and Patterns
- NZ theme fabric • Beading

Proud to support the Handcraft section
OPEN 7 DAYS
 22 Beach Rd, Kaikoura
 Phone 319 5465

HARMAC CONCRETE

- Suppliers of CEMIX products: Sealers, retarders & colour products
- Bulk landscape supplies: Bark, compost, decorative stone etc

Certified for normal and special grade Concrete
FOR ALL YOUR CONCRETE REQUIREMENTS
 Ph Craig 0274 390 399

THE ONLY THING THAT WON'T LAST FOREVER IS ITS PRICE

Save up to \$150* on selected STIHL Brushcutters and Hedgecutters.

<p>STIHL FS 90 R Brushcutter 1.800L, 30.0kg, 5.5hp NOW \$845</p>	<p>STIHL FS 110 Brushcutter 1.800L, 31.0kg, 5.5hp NOW \$995</p>	<p>STIHL FS 130 Brushcutter 1.800L, 30.0kg, 5.5hp NOW \$1,145</p>
<p>STIHL HS 45 450mm Hedgecutter 0.700L, 17.0kg, 4.7hp NOW \$745</p>		

*Save between \$50 and \$150 on STIHL FS 90, FS 90 R, FS 110, FS 110 R, FS 130, FS 130 R and HS 45 models. Offer valid until 28 February 2011 or while stocks last.

Show Special – Offer extended until 31st March

Dunlea Products Ltd
 66 Beach Road, Kaikoura 7300

You'll only need one. **STIHL**

KAIKOURA
 A GREEN GLOBE
 CERTIFIED COMMUNITY

Wish the A&P committee and contestants a successful show and hope everyone enjoys the events in our naturally spectacular environment

Have a great time and check out our stall

www.kaikoura.govt.nz

Kaikoura A & P Show

A Kaikoura Star Advertising Feature



All the fun of the fair



The Joiners Shop
KAIKOURA
 For all your joinery needs:

KITCHENS DOORS STAIRS
GARAGE DOORS GLASS
DESIGNER SHOWERS DOORS

19 Beach Road, Kaikoura
 Phone 319 5562 • AH 021 244 8005 • Fax 319 5574

IAN WALKER
Mechanical Repairs

MTA Motor Trade Association (Inc) Member

- Petrol and Diesel Mechanical Repairs
- 24 hours Salvage Service
- Enzed Hydraulic Hoses
 - WOF Issued
 - Oil and Grease

PHONE 03 319 5944
 MOBILE 0274 334 283
 Edmund Avenue, Kaikoura



NORTH CANTERBURY WOOLS LTD
BROUGHAM SMITH
 Wool Buyer

* Shed Clean Outs * Buying Dags
 * Buy and Sell on Behalf
 * Door Buys

Woolstore
 382 Dixons Road, Loburn

Phone Bus: (03) 3128-856
Fax: (03) 3128-859
Mobile: (027) 336-0058

CALTEX KAIKOURA
 Service Station and Convenience Store

Good range of hot food including chicken & chips
 Homemade sandwiches & muffins
 Awesome coffee

Dive Fills
 Rock Gas (LPG specialists)
 Firestone Tyre specialist
 Fully computerised wheel alignment

Firestone direct
 OPEN 7 DAYS, 6.00am - 10.00pm
Ph 319 5492

Hilton Press are proud supporters of the Kaikoura A&P Show

hiltonpress
 731a Main South Road, Templeton, Christchurch 4.
 Telephone 03 349 9700
 Facsimile 03 349 9701

Kaikoura A & P Show

A Kaikoura Star Advertising Feature



Looking back to the 1st Show

As the Kaikoura A&P Show heads towards its centenary year in 2012, it's worth noting how far the event has come since the first Show back in 1906.

This Show was held at the old recreation grounds, which are now the campgrounds on Beach Road, using the local Guide and Scout rooms and drill hall.

Accounts of this show have up to 800 entries competing, and people attending who came from far and wide for that first show. As there were no roads north

or south at the time, most people who travelled some distance to get there came by boat, and the SS Wakatu made a special voyage on the Monday before Show weekend from Lyttleton to get all the keen show-goers to Kaikoura.

The first President of the A&P Association was AW Ingles and the first Secretary was WB Ingram, who was also the editor of the Kaikoura Star.

These two were integral in putting the case for an annual show to the rural

community, Ingram was quoted in an issue of the Kaikoura Star as saying that "nothing seems easier and more likely to improve the stock of the district than to compete with neighbours in a show."

Details of the events that were held at that first show are sketchy at best, but it is presumed that for the most part it revolved around the judging of stock and competitions in farming practices.

One of the newspapers at the time, The Canterbury Times, carried the following

description of what the 1906 inaugural A&P Show meant to the province: "The first show marked an epoch in the history South Marlborough. The fertile locality in which Kaikoura is situated lacks only communications to bring it to rapid progress."

105 years and 98 shows later, the 99th A&P Show next weekend will be another successful edition of a Show which has characterised the district for a very long time.



50th Jubilee Show 1962. Mr F A Gregory (almost out of sight at left) and his daughter Avril in dog cart. Christopher Guthrie and Miss S. Acton Adams.



A & P Show, Past President being driven in a car. Men left-right:-Humphrey Acton-Adams, Geoff Gray, Vic Corbett in back ground. Front driver Warwick Horne - Jack Reid. C1960-1962

Pregnancy Testing
For pregnancy testing your cattle contact
Dave McIlroy Kaikoura

Livestock Ultrasound Scanning Ltd.
Phone A/H: 03-319 7802
Mobile: 021 159 7284

KAIKOURA BAKERY

- Hot Pies
- Fresh Bread
- Pizza
- Cream Cakes
- Paninis
- Filled Rolls
- Slices

Wishing the A&P Show Committee a successful show

Your Local Bakery
OPEN 7 DAYS
69a Beach Road, Kaikoura, Phone 03 319 5200

CHICKEN TO GO

After the show call in for some CHICKEN TO GO

Service station and convenience store
CRT cards welcome

BR, GO KAIKOURA
OPEN 7 DAYS
6am - Midnight
84 Beach Road
Ph 319 5036

G GILL CONSTRUCTION KAIKOURA

LIVESTOCK SUPER and LIME CARTAGE and SOWING HIAB HIRE ALL STOCK and GENERAL CARTAGE

Call Bruce 319 5217 Business and After hours

a member of Law X Link

Legal Advice

Bernie Rowe Alison Weaver Paul Gibson Melanie Timms

If you are buying or selling a house, business or farm; getting married or separated; planning for retirement; developing property; or dare we say, having a dispute – you will need a good lawyer!
Call now for an appointment ...

A partner from Gascoigne Wicks is available every Friday in the PGG Wrightson office, at 98 Beach Road

Gascoigne Wicks LAWYERS

PGG Wrightson Ltd | 98 Beach Road | Kaikoura | T: 03 319 5012
E: enquiries@gwlaw.co.nz | www.gascoignewicks.co.nz

The power of many. The strength of one.

Kaikoura A & P Show

A Kaikoura Star Advertising Feature



Show Programme

8.00am	Hack & Pony Showing , Miniature Horse's Group D - Led Rein followed by 1st year ridden
8.30am	Stock & Station Horse Events
9.30am	Sheep Judging
10.00am	Produce Shed / Dog / Flower & Wool Judging Thistle Contest
10 – 10.30am	Hardman / Hardwoman Competition (approx)
10.30am	Sheep Shearing Competitions Thistle contest 'benched' Main Marquee open – Photography, Health Providers, Lions, Plunket
11.00am	Plunket Children's Decorated Bike Contest Farm Yard Corner Judging
11:30am	Entries Close for Baby Show, Miss Kaikoura,
11 .00am	Entries close for Mother/ Daughter Look-A-Like
11.30am	Round the Ring Hunter & Show Jumping Classes (approx) Judging Baby Show followed immediately by Miss Kaikoura, Mother/Daughter Look-A-LikeContest
midday	Produce Shed open / School Displays Open / Wool
1pm	Terrier Racing (venue to be advised)
midday to 4pm	Mechanical Bull Riding & Competition
1.30pm approx.	GRAND PARADE Followed by a Marching Display
After Grande Parade	Hack & Pony - Kaikoura Leap Six
Continuation of Show	Jumping & Round the Ring Hunter
4.00pm	Produce Shed Closes – Exhibitors to collect items Prize money to be collected from the Secretary's office



Entertainment: Side Shows, Merry Go Round, Chair O Plane, Ferris Wheel, Mini Jeeps, Bouncy Castle, Mechanical Bull, Adam Allsorts, Kaikoura Voluntary Fire Brigade Display, Trade sites, Kaikoura Farmyard - Animal Corner, Main Marquee, Thistle contest.

New Contests: Mother/Daughter Look-A-Like and Plunket decorated bikes

3497651AA

SECTION SIZES – 619m² to 4230m²

ONLY 3 REMAIN
CALL TODAY

AN EXTRAORDINARY OFFER FROM OCEAN RIDGE
plus some home truths about the current market. You can't stimulate growth without creating opportunity. The ever-positive industry advisors tell us that change is just around the corner. **So what are we to do? We're going to do something different because that's how we always operate.**
As developers of Ocean Ridge, we have never been ones to sit on our hands or rest on our laurels despite selling over 80 sections, and we certainly don't like to follow the pack. With growth comes opportunity. **FIVE SECTIONS AT OCEAN RIDGE ARE GOING FOR A SONG. PRICES START FROM \$85,000.**
Five. No more! We are not only confident in our product but also confident in the future of Ocean Ridge and we are prepared to spearhead this by offering these sections for a price that will definitely raise a few eyebrows. Five sections. Heavily reduced. **BUY FOR THE FUTURE – TODAY!** Let's get some growth happening again **these five sections are THE SEEDS WE ARE SOWING SO WE CONTINUE TO FLOURISH.**



To find out more about Ocean Ridge and this extraordinary offer, please call Bruce Harvey on: **0800 667 849**, visit our information centre or our website: www.oceanridge.co.nz **Kaikoura's premier residential development**


OCEAN RIDGE
 kaikoura
it's in your nature